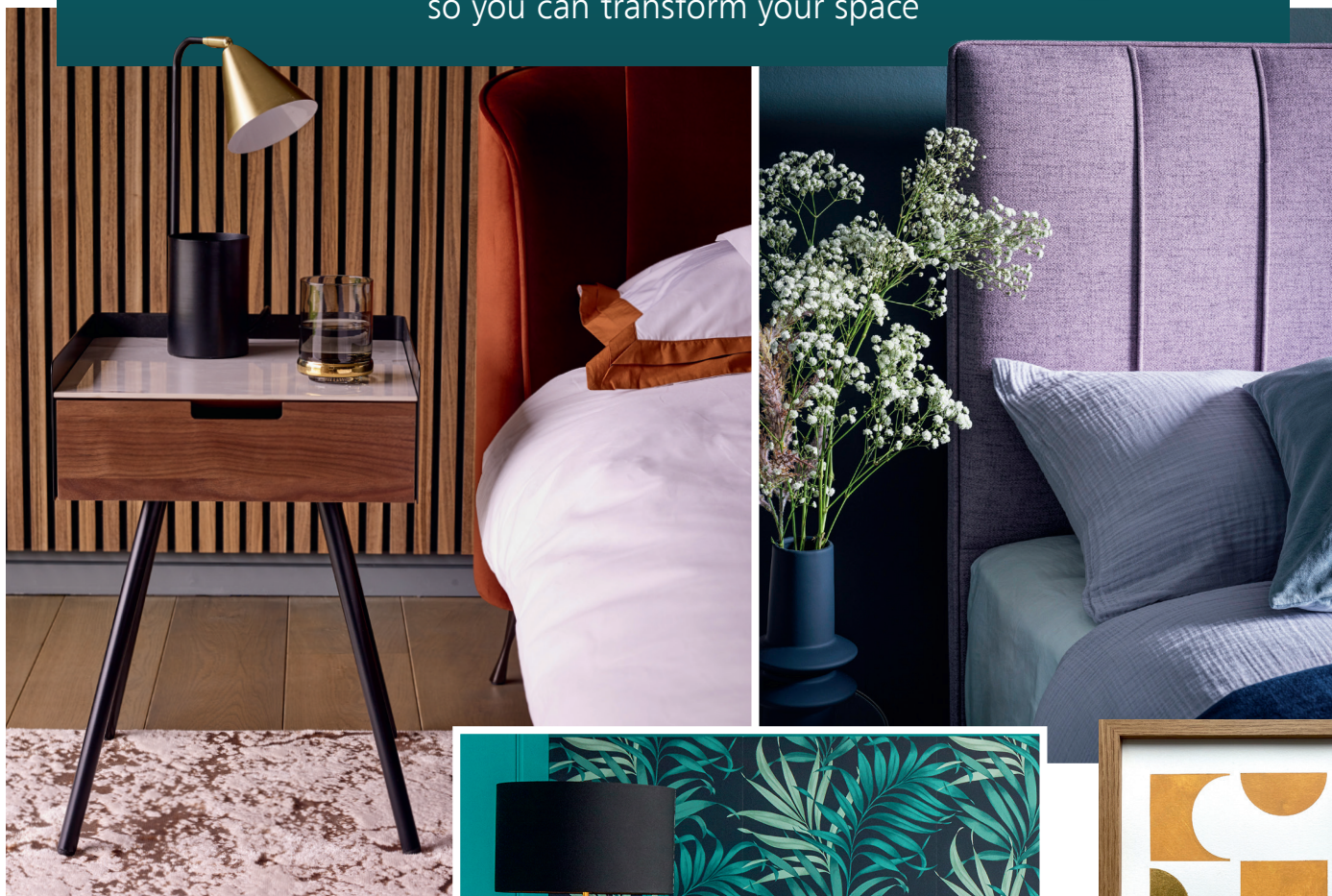


# THE AW22 TRENDS TO KNOW

Looking to refresh your home for the winter?  
We've rounded up the latest looks from the high street  
so you can transform your space



For avid interior design lovers, there are few things more exciting than seeing fresh, new looks making their way into the shops – and eventually our homes – at key points in the year. But just like you wouldn't entirely revamp your wardrobe with every new season's fashions, you wouldn't redecorate your house with each new trend. No, it's all about seeing which particular styles you're drawn to, then incorporating a few choice elements into your existing set-up to give it a little refresh. This autumn/winter, the stand-out trends are all in touch with nature – from relaxing 'Lavender Fields' to the dark and brooding 'Midnight Jungle', as well as the warming 'Winter Sun'. Which look will catch your eye? [YH](#)



Feature Yvette Filer





Surround yourself in calmness with lavender-coloured walls  
**Matt emulsion in Lavender Cupcake**, from £14 per 2.5L, Crown Paints



**Lavender knitted patchwork throw**, £45, The Wisteria Tree

**Wood paint in Purple Orchid**, £20 per 750ml, Thorndown Paints

**Joules Country Cottage mug**, £9, John Lewis

**La Rochère bee-stemmed wine glass in Purple**, £8, Maison Chérie

Spring-like lavender hues are reimagined for winter when paired with darker tones

**Hypnos Bespoke Finesse king-size divan in Brooklyn 023 Lilac**, from £2,299, Furniture Village



# LAVENDER FIELDS

By naming 'Very Peri' – a punchy shade of periwinkle – as its Colour of the Year 2022, Pantone ensured that purple-blue hues would be popular throughout the spring and summer. As we enter the latter, colder months of the year, these tones have just as much of a place in the home as they do in springtime. Lavender has historically been regarded as a scent to help you unwind, and what more could you want during the long months of hibernation? This trend lends itself to the notion that we can all benefit from enjoying a slower, more relaxed way of life.

▼ **Raffia storage pots in Natural**, from £9, Bohemia Design



▲ **Greenhouse planter**, £12, Red Candy



**Lavender topiary**, £30, Matalan

**Heritage pot in Mint Green**, from £9.99, Sproutl



**Cotton plain placemats in Purple**, £3.99 for a set of two, Homescapes



**Pressed purple orchid framed art**, £49, Maddy's Workshop



**Twist candles in Orchid Purple**, £12.50 for two, Five And Dime



**Purple Lavender cushion**, from £27.99, Perkins & Morley



**Mineheart Back to Nature wallpaper in Purple**, £82 per roll, Lime Lace



**100g Cube Soap in Lavender**, £3.50, Live Laugh Love

## Our experts say...

'Balance lavender hues with a colour palette inspired by nature. Combining this shade with soft neutrals and textures works really well for a contemporary feel with a nod towards cottagecore.'

Sanel Konyar, Luxury Interior Designer and Founder of Interior Kollection

Make a statement by incorporating a feature wall into your new scheme – it's easier than you'd think with a pre-designed mural

**Lake Santharia mural in Lilac**, from £295, Avalana





## MIDNIGHT JUNGLE

Palm prints and animal motifs are already popular, but we're beginning to see these elements surrounded by sultry black and navy colours as the nights draw in. 'A colour so prevalent in nature, navy blue is a soothing shade that brings feelings of stillness and serenity,' says Dervla Farrell, Online Colour Expert at Colourtrend. You can really make a lasting impression by leaning into this look. Think along the lines of creature comforts to keep it inviting – plenty of tactile textures, dark tones and jungle-themed accessories. It's totally acceptable to opt for faux plants, too, particularly in rooms that don't get much natural light.



Flamboyant animal lampshade in Deep Navy, £40, Mint & May



Gaming indoor-outdoor recliner bean bag and footstool in Navy Blue, £99.99, BeanBagBazaar

◀ Gold embossed faux plant and pot, £10, Primark



Fill your bedroom with moody tones and rich fabrics to create a sumptuous slumber space  
**Zambia bed in Indigo Mix**, from £1,899, Sofology

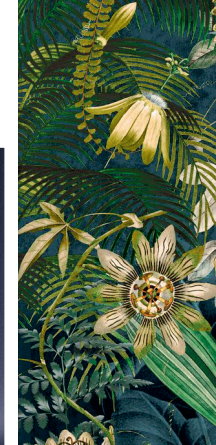
### Our experts say...

'This look is bold, atmospheric, and enchanting. Incorporate plenty of influences from nature by mixing real and faux greenery. Create a cosy, inviting space by using plush, tactile accessories in deep blues and black tones.'

Nadia McCowan Hill, Resident Style Advisor at Wayfair



Velvet textures add to the richness of black and navy tones, and pair well with silky-smooth satin  
**Enchanted four-seater sofa in Black Sensual Velvet**, £799, DFS



Arthouse Wild Vibes tropical faux panel wallpaper in Navy and Emerald, £16.99 per roll, The Range

16cm Empire shade in Black and White Palm by Matthew Williamson, £39, Pooky



Have fun with fabrics to bring a variety of colours and detail into an otherwise dark trend  
**Tahiti Collection fabric**, from £30 per metre, Ashley Wilde

Rousseau The Equatorial Jungle poster, £9.95, Desenio



Zira monkey table lamp with shade in Silver, £90, dar lighting



Matte wall paint in Mysterious, from £27 per 0.94L, Benjamin Moore

Bamboo tree, £151.99, Wayfair



Velvet storage pouffe in Navy, £35, Matalan



Sheepskin rug in Navy Blue, £80, Baa Stool



▲ Black tropical cushion, £39, Dwell

Golden palm candlestick, £25.95, The Grey Works



Willow Leaves patterned mug, £5, ProCook



## DECORATING IDEAS



Transport yourself to a far-flung place without even leaving your sofa by choosing travel-inspired soft furnishings  
**Darwin luxury velvet three-seater sofa in Orange Umber**, £1,299; **Warwick luxury velvet footstool in Old Gold**, £429; **Small Amber candle**, £5; **Multiwick Amber candle**, £7; **Recycled plush faux fur rug**, from £59; **Printed fleece throw**, £7; **Lenon plush throw in Orange**, £16; **Eska zigzag faux fur cushion**, £14; **Cheetah faux fur cushion**, £15; **Teddy bear cushion in Ochre**, from £6; **Cheetah faux fur throw in Brown**, £65; **Slim gold metal candle holder**, £10; all Dunelm

**Vivien round mirror in Yellow Velvet**, £69, Cult Furniture

**Areaware Table Tiles Optic wooden coasters**, £16.80 for six, Connax

▼ **Appolia ceramic rectangular baker in Yellow Saffron**, from £28.99, Peugeot



**Fabulous Flying Crane reversible cushion**, £25, Joe Browns

## WINTER SUN

For those who yearn to escape those dull and dreary days the months ahead typically bring, transforming your home may have a longer-lasting impact on your wellbeing than a last-minute holiday. Dunelm's AW22 Luxe Traveller range has taken the helm on this adventurous look, featuring rich-toned fabrics, glimmers of gold, and an eclectic mix of worldly prints. Take inspiration from your own travels and bring them into your scheme. Perhaps a handmade bowl or a printed cushion cover bought on a special holiday can be your starting point? Use the colours and patterns throughout your space to create a cohesive yet personal look.



Rich, dark woods bring warmth to a bedroom, especially when paired with reds and golds  
**Bina bedside table in White**, £119; **Torto tall chest of drawers**, £549, both Dwell



Use the natural light that enters your home to your advantage by choosing colours and materials that are enhanced by it  
**Zeena Ancares herringbone Brown Vinyl**, £39.99 per sq m, Carpetright

▲ **Zuiver cork wall clock with moulded numbers**, £59, Cuckooland

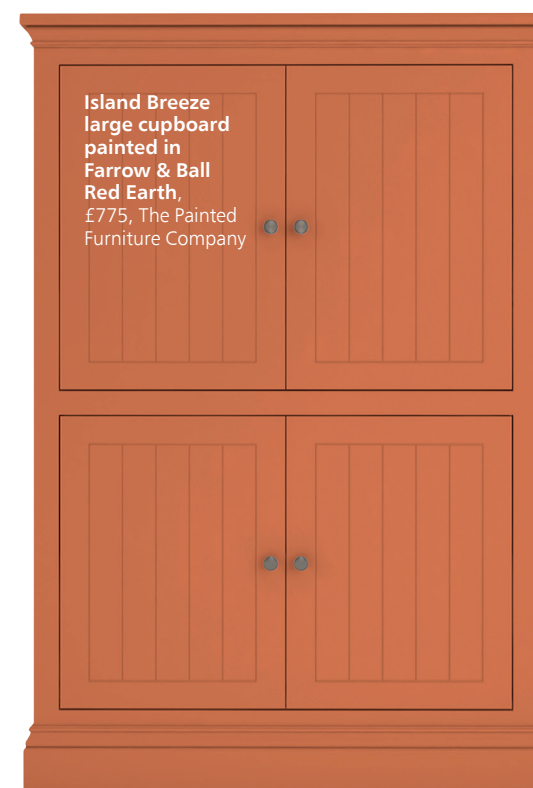
▲ **Saffron hydrangea stem**, £19.99, Dowsing & Reynolds

## Our experts say...

'Terracotta is at the forefront of interiors at the moment – it's natural, earthy, and brings warmth and depth to a scheme. There's something so comforting and enveloping about it that instantly makes the space more homely.'  
**Justyna Korczynska**, Senior Designer at Crown Paints



**Matt emulsion in Mustard Jar**, from £14 per 2.5L, Crown Paints



**Island Breeze large cupboard painted in Farrow & Ball Red Earth**, £775, The Painted Furniture Company



◀ **Rei picture in Mustard and Gold**, £25, NicoletteTabramArt on Etsy



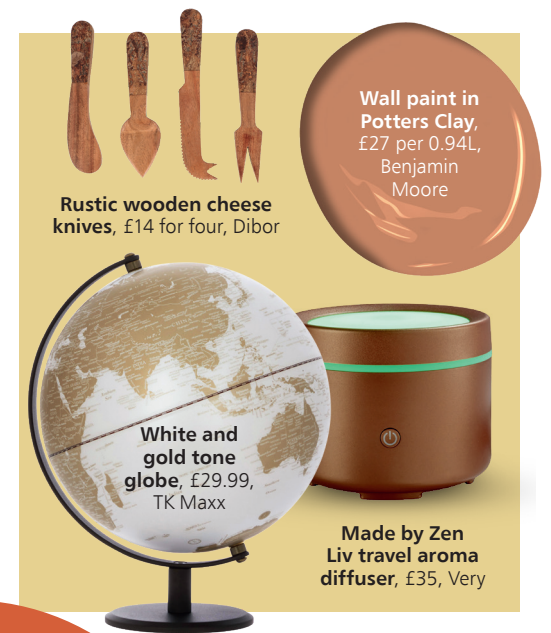
▲ **Abby iron lantern in Antique Gold**, £44.99, Dobbies



▲ **Upholstered lambswool footstool in Ochre Harvest**, £102, Welsh Otter



**Bekkeblom table runner in Yellow**, £7.50, JYSK



**Rustic wooden cheese knives**, £14 for four, Dibor

**White and gold tone globe**, £29.99, TK Maxx

**Wall paint in Potters Clay**, £27 per 0.94L, Benjamin Moore

**Made by Zen Liv travel aroma diffuser**, £35, Very