

## FACTFILE

### Who lives here?

Mia and Henry Foxton with their three teenage children.

### What type of house is it?

A three-bedroom apartment within a three-storey, Georgian terraced house in Cheltenham.

### What was the aim of the project?

To create a 'home away from home', suitable for the whole family and relatives who come to stay.

### Who designed it?

Daniel Cook and Laura Styler of Furnish Interior Design.

### How much did it cost?

The whole project cost around £140,000.

### How long did it take?

Ten months.



A large open-plan space is perfect for when all the family is over and guests come to visit.

# A place to call home



Interior designer Daniel Cook combined rich colours, patterns, and bespoke furniture to help bring life and personality into this family space

Words: Yvette Murrell Photography: Adam Carter

Mia and Henry Foxton bought this impressive Georgian apartment so they could have a UK base in Cheltenham, Gloucestershire, while their children attend school nearby. And although the interiors had been updated for sale, it lacked the homely feel they wanted for themselves and their three daughters. Daniel Cook and Laura Styler from Furnish Interior Design transformed the space from a stark house to a modern, luxurious home. Here, Daniel tells us how they did it...

## Working to the brief

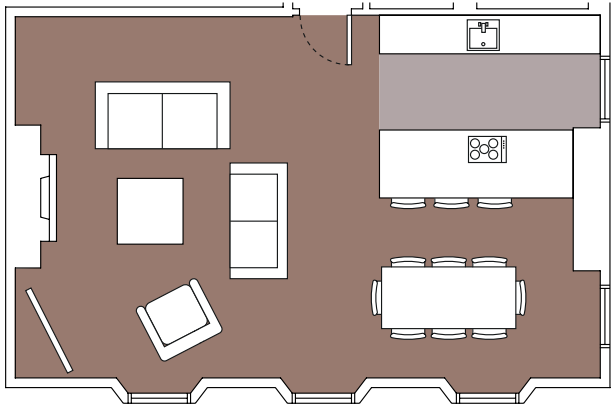
From the outset, there was one clear goal for this property – it needed to feel like home, with a large living area where the whole family could gather and spend quality time together. But with three teenage girls, Mia and Henry wanted to make sure everyone had their own space they would feel comfortable in. Fortunately, the kitchen and main bathroom were already in excellent condition, so we were asked to focus on designing the living and dining areas, as well as the three bedrooms.

As the family predominantly live abroad, most of our communication happened over Skype and email. But before we came on board, the Foxtons had done some online research and came across several designers' styles they liked and wanted to emulate. We pulled out key elements from each and it became apparent they wanted a comfortable, luxurious feel with a contemporary edge. So with that in mind, we got to work on creating the designs.

## Designing the space

Laura and I started off by creating a colour scheme in the living area. We focused on achieving a cosy, relaxing atmosphere by using rich, vibrant ochres and golds and calming blues and greys – which would then translate through to the rest of the rooms.





**Right:** Every piece of furniture was carefully mapped out before it arrived to ensure the living area had enough seating without looking too crowded.

**Below right:** The dining table sits in the corner of the room, next to two large windows with beautiful views overlooking Cheltenham.

Taking into account the kitchen's location and the property's period features, it was fairly easy to come up with a layout that would work. There was one clear area for the dining table, and the original fireplace would be the living area's focal point. The family wanted as much seating as possible, but didn't want the space to be crowded – with travelling being a big part of their life, they needed to feel relaxed, not confined. As the living area is large and open-plan, I tried to divide it up aesthetically through the furniture's placement, avoiding the need for screens or walls.

When it came to the bedrooms, we carefully considered everyone's individual needs. Mia and Henry requested a super king size bed in the master bedroom, so I had to work out how best to place everything else. Bespoke bedside tables fit precisely between the headboard and door frames, and we chose wall-hung lights to make the most of space either side of the bed. We even measured the suitcases, to ensure there was ample wardrobe space to neatly store them. Our only job in the existing master ensuite was to upgrade the rather drab décor. We did so with black, high-gloss metro tiles and an elegant Savoy Victorian basin for a more luxurious finish.

The second bedroom is for their two youngest daughters, but also for guests on occasion – so it needed to be suitable for both. We went for a slightly feminine look here, yet still maintained a sophisticated style. I wanted to highlight the house's period features in a way that would work with the family's more contemporary taste, and ended up using ceiling roses as a feature and painting them the same colour as the wall. The bed in this room is actually made up of two divans, which can be pulled apart to make twin beds, and we made the headboard wide enough so it works for either configuration. In terms of layout, I like to have a bed facing the window wherever possible, so that determined where we placed the rest of the furniture.

The third and final bedroom is the smallest, reserved for the couple's oldest daughter, and was probably my favourite to design. This layout presented more of a challenge, as there are alcoves either side of a chimneybreast, so any furniture needed to fit comfortably into those spaces. Laura and I had fun coming up with ideas to create a boho-chic vibe in this room using bright colours and cool, geometric patterns.

### Finishing touches

As the family were living abroad and not bringing much over with them, we wanted to make sure the place didn't look bare but was ready for them to just unpack their suitcases and settle in. We specially commissioned Miranda Carter – one of a few artists we tend to use – to design the stunning artworks in the living area. Art is so subjective, but we thought Miranda's abstract style was absolutely perfect for this particular project and adds the perfect finishing touch. [KBB](#)



The existing black contemporary kitchen makes a statement in this Georgian apartment, but fits well with the family's taste and lifestyle.



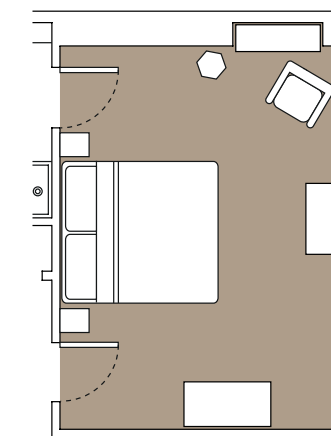




**Left:** The ochre, blue, and grey colour scheme is carried through from the living room into the master bedroom.

**Below:** A bespoke built-in wardrobe was designed specifically around the size of Mia and Henry's suitcases, so they could be neatly put away when the couple are in town.

**Opposite page, top:** The shades used on the custom headboard match the colours used in the rest of the room, and it stands boldly against a backdrop of soft-grey Cole & Son wallpaper.



## PROJECT NOTES

**Interior designer Daniel Cook says...**

### What was the biggest challenge?

The Foxton family predominantly living abroad – so much of the communication around design and budgeting had to be done via Skype and email. To overcome the distance, we put together detailed moodboards, sent over material swatches and used CAD software to bring the designs to life, helping everyone visualise the space.

### Which elements took up the majority of the budget?

The sofas, dining table and dining chairs. Mia and Henry wanted a luxury feel, so we invested in these key pieces.

### Do you have any advice for homeowners embarking on a similar project?

Be prepared to discard something you may like, because it may not be right for the new scheme. Instead, focus on the overall feel you want to achieve and work back from there, seeing what pieces would work well. We often have homeowners initially say 'do what you want but we must keep this sofa', but this frequently ends up hindering the creative design process.



**Above:** Multiple mirrors and carefully placed lighting help create the illusion of more space in the master ensuite.

**Right:** Black high-gloss metro tiles have turned a plain bathroom into a much more luxurious space.



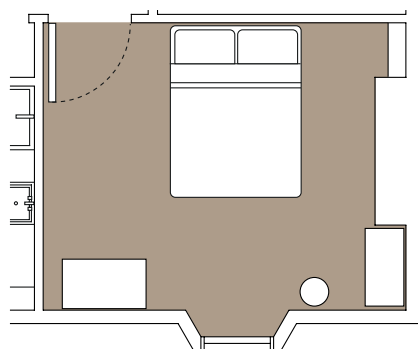
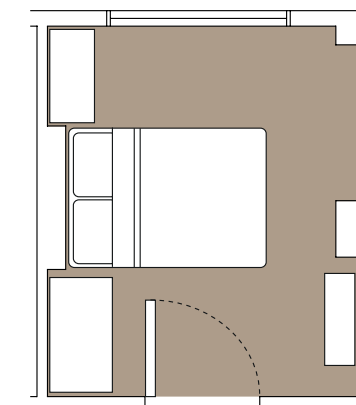




"I wanted to highlight the house's period features in a way that would work with the family's more contemporary style, and ended up using ceiling roses as a feature and painting them the same colour as the wall."

**Left:** The beds pull apart to make twin beds as required; the headboard is wide enough to fit both. Painted to match, ceiling roses on the wall work as a design feature.

**Below left:** Daniel and Laura used ombre curtains, a knotted chandelier and cool geometric bedding to create a fun festival vibe in the oldest daughter's room.



**Right:** In the second bedroom, original artwork by Chris Stoneman adds a modern twist to an otherwise traditional setting.



**Left:** Each room's layout was carefully considered. Here, Laura and Daniel ensured there was enough storage room and the bed could face the large Georgian sash windows.

**Above right:** The detailed Cole & Son wallpaper gives the effect of Moroccan-style tiles, and works well against the vibrant teal accent colour.



# SourceBook

## DESIGN

**Interior designers** Daniel Cook and Laura Styler, Furnish Interior Design (01242 323828 or furnishinteriordesign.co.uk)

## KITCHEN

**Cabinetry** For similar try Bulthaup (0844 846 7810 or en.bulthaup.com)  
**Appliances** Siemens (0344 892 8999 or siemens-home.co.uk)  
**Worktops** For similar try Caesarstone (0800 158 8088 or caesarstone.co.uk)  
**Flooring** For similar try Hawwoods (01524 737000 or hawwoods.co.uk)  
**Dining table and chairs** Tom Faulkner (020 7351 7272 or tomfaulkner.co.uk)

## LIVING AREA

**Sofas and chair** Go Modern (020 7731 9540 or gomodern.co.uk)  
**Cushions** Jessica Zoob (07966 572204 or jessicazoob.com); Fomasetti from Amara (0800 587 7645 or amara.com)  
**Coffee table and console table** For similar try West Elm (0800 404 9780 or westelm.co.uk)  
**Rug** Riviere Rugs (020 3601 4600 or riviererugs.com)  
**Pendant light** Martin Huxford (01903 740134 or martinhuxford.com)  
**Wall art** Miranda Carter (mirandacarter.com)

## MASTER BEDROOM

**Headboard and bedside tables** Bespoke by Furnish Interior Design, as before  
**Bedding** For similar try Made (0344 257 1888 or made.com)  
**Bedside lamps** For similar try Loaf (0845 468 0698 or loaf.com)  
**Wallpaper** Cole & Son (020 8442 8844 or cole-and-son.com)  
**Chair** Atkin & Thyme (020 3768 7775 or atkinandthyme.co.uk)  
**Ceiling pendant** For similar try Heal's (0333 212 1915 or heals.com)  
**Ladder and curtains** Bespoke by Furnish Interior Design, as before

## ENSUITE

**Basin** Savoy from Bathstore (0330 0535661 or bathstore.com)  
**Shower, taps, WC, radiator and mirrors** For similar try Bathstore, as before  
**Tiles** For similar try Walls and Floors (01536 31473 or wallsandfloors.co.uk)

## SECOND BEDROOM

**Headboard** Bespoke by Furnish Interior Design, as before  
**Divan beds** Feather & Black (01243 380600 or featherandblack.com)  
**Bedside table** For similar try Nest.co.uk (0114 243 3000 or nest.co.uk)  
**Bedside light** For similar try Loaf, as before  
**Bedding and curtains** Ada & Ina (020 7183 7986 or linenfabrics.co.uk)  
**Ceiling pendant** For similar try Heal's, as before  
**Chest of drawers** Swoon Editions (020 3389 7550 or swooneditions.com)  
**Wardrobe** For similar try Loaf, as before  
**Artwork** Chris Stoneman from Rise Art (020 8629 1525 or riseart.com)

## THIRD BEDROOM

**Headboard and shelving** Bespoke by Furnish Interior Design, as before  
**Bedside table and chest of drawers** Graham & Brown (0800 168 3795 or grahambrown.com)  
**Bedside light** Nook London (020 8983 0215 or nooklondon.com)  
**Bedding** For similar try La Redoute (0844 842 2222 or laredoute.co.uk)  
**Curtains** Ambry fabric by Designers Guild (020 7351 5775 or designersguild.com)  
**Mirror** For similar try Cox & Cox (0844 858 0744 or coxandcox.co.uk)  
**Ceiling pendant** Bali England (+39 0650933614 or baliengland.com)  
**Wall hanging** For similar try Maisons du Monde (0808 234 2172 or maisonsdumonde.com)  
**Wallpaper** Cole & Son, as before

## COST

A similar interior design scheme would cost around £140,000

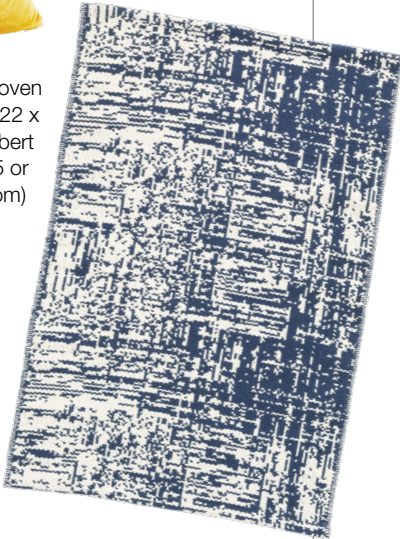
## GET THE LOOK

**Right:** Ovation five-light pendant, £450, Där Lighting. (01295 672200 or darlighting.co.uk)



**Left:** Velvet cushion in Curry Yellow, £35, Abode Living. (01273 621116 or abodeliving.co.uk)

**Right:** Drybrush Blue woven cotton rug measuring 122 x 183 cm, £205, Dash & Albert Europe. (+34 914322085 or dashandalberteurope.com)



**Left:** Suitcase storage boxes, from £35 to £95, Oliver Bonas. (020 8974 0110 or oliverbonas.com)



**Right:** Pols Potten ceramic pill stool in Blue Bronze, £126, Amara. (0800 587 7645 or amara.com)



**Left:** Calvin armchair in teal velvet, £399, Atkin & Thyme. (020 3768 7775 or atkinandthyme.co.uk)

