

# Hello sunshine

Eric Petitfils wanted to have a lighter, brighter kitchen-dining space at the heart of his stylish Hackney home

Words: Yvette Murrell Photography: Mark Weeks



## FACTFILE

### Who lives here?

Eric Petitfils, a sales director working in financial services.

### What type of house is it?

A two-bedroom garden flat on the ground floor of a Victorian terraced house in Hackney.

### What was the aim of the project?

To create a light open-plan space and optimise access to the garden.

### Who designed it?

Christian Clemares, director of CCASA Architects.

### How much did it cost?

The cost for the whole refurbishment was around £130,000.

### How long did it take?

The project took four months to complete.



The space was originally very dark and gloomy, so bringing in as much natural light as possible was one of the project's most important aims. Christian designed an extension into the disused side-return, in order to create the larger, open-plan room Eric wanted. The kitchen, previously located at the back of the house and obstructing the view of the garden, was placed in this new area.



Cooking and gardening are two of Eric's passions, so right from the start the kitchen and its links to the outdoors were central to the renovation. "We wanted to create the illusion that the kitchen was part of the garden," architect Christian Clemares explains. "To give that impression, it has been designed surrounded by a glass link to the main house including a glazed roof and door. When the weather permits, the sliding doors at each end can be opened, emphasising the indoor/outdoor feel. This also allows air to flow through the kitchen."



The construction work and glass details took up the majority of the budget, but the overall design did not suffer. Christian used his industry contacts, researching companies to find smart ways to save money – for example by saving on non-visible areas, such as cabinet carcasses. "You don't need to spend a lot of money to have great design if you are careful to choose the right materials," he says. "It's very easy to combine expensive and low-cost solutions to create a fantastic space."

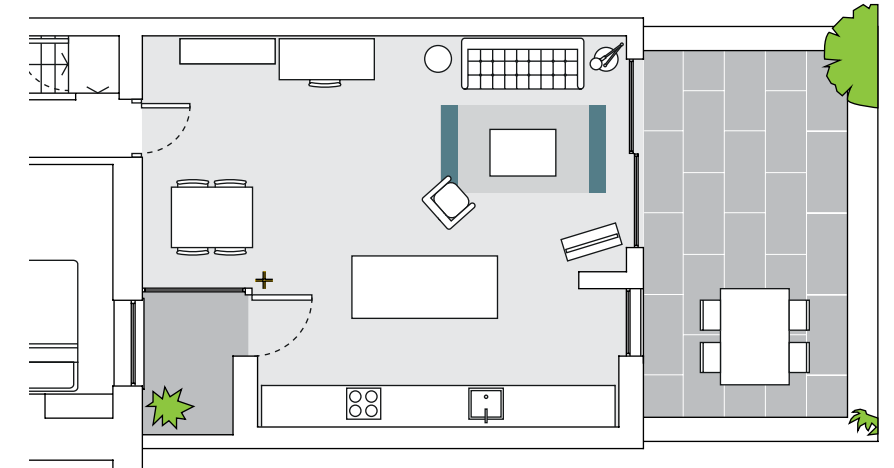


Extending into the side return created a natural light well, allowing even more sunshine into the kitchen. By placing the dining table here, Eric now has welcoming space to entertain. Yellow, one of his favourite shades, is used as an accent colour throughout the scheme – Eric even had a supporting pillar painted, turning it into a statement feature.



"You don't need to spend a lot of money to have great design. It's very easy to combine expensive and low-cost materials to create a fantastic space."

Made bespoke from Corian, the worktop flows seamlessly into the sink. Christian deliberately chose light, clear colours for all surfaces, to help reflect light all around the room. Bolder finishes – such as this Duetto brushed-copper tap by Olif – were fitted to add a touch of personality and style.



## GET THE LOOK

**Left:** Inverie pendant in amber with a dust grey rim, from £85, Pooky. (020 7351 3003 or pooky.com)

**Below:** Pronteau 3 IN 1 Prostream hot-water tap in Urban Copper, £849, Abode. (01226 283434 or abodedesigns.co.uk)



**Above:** Orla Kiely 70s Flower small plant bag in Dandelion, £22, Wild & Wolf. (01225 789909 or wildandwolf.com)



**Left:** Staggered Block cushion cover, £29, West Elm. (0800 404 9780 or westelm.co.uk)



**Left:** Broadway sideboard, £699, Atkin and Thyme (020 3768 7775 or atkinandthyme.co.uk)

Eric had been longing to create an open-plan living space where he could relax and spend more time entertaining friends and family. He began researching ideas on Pinterest and Houzz, to get an idea of the contemporary look he wanted, but found discussions with the architects to be the most valuable. Architect Christian was able to provide advice and expertise on what was feasible given the space and budget, and how the whole renovation process would work.





Eric now really enjoys spending time in the new space. “I love being in the kitchen, cooking under the stars, and always having a view to the garden.”

# SourceBook

**DESIGN**  
**Kitchen design** Christian Clemares, CCASA Architects (07952 674664 or ccasa.co.uk)

**KITCHEN**  
**Cabinetry** Internal carcasses and cabinets above counter, Ikea (020 3645 0000 or ikea.com/gb); Plywood doors, Building By Design (01263 735140 or building-by-design.co.uk)  
**Appliances** Hob, Smeg (0844 557 9907 or smeguk.com); Oven, Neff (0344 892 8989 or neff.co.uk); Coffee machine, De'Longhi (0845 600 6845 or delonghi.co.uk)  
**Worktops and sink** Corian (0800 962116 or corian.co.uk)  
**Splashback tiles** Solus Ceramics (0121 753 0777 or solusceramics.com)  
**Tap** Olif (01883 212100 or olif.co.uk)  
**Flooring** For similar, try Topcret (020 7624 2180 or topcret.com)

**DESIGN**  
**Dining table** Habitat (0344 499 4686 or habitat.co.uk)  
**Dining chairs** Yellow chairs, Dwell (0845 675 9090 or dwell.co.uk); Wooden chairs, for similar, try Wayfair (0800 169 0423 or wayfair.co.uk)  
**Lighting** Pendant, Heal's (0333 212 1915 or heals.com); Reading lamp, Jieldé (+33 478201016 or jielde.com/en)  
**Artwork** (Dining room) Jacobo Valenti at Palau de Casavells (+34 678447376 or palaudecasavells.com); (Above sofa) Yves Marchand & Romain Meffre (marchandmeffre.com)  
**Rugs** (Living area) Heal's, as before; (Dining area) Habitat, as before  
**Sofa** 2M Design (020 7254 5202 or 2mdesign.co.uk)  
**Chair** Vintage original, for similar, try eBay (ebay.co.uk)  
**Coffee table** Hanbel Monpas (+34 943344305 or hanbel.com/en)  
**Cushions** Heal's, as before; West Elm (0800 404 9780 or westelm.co.uk)  
**Side table** SCP (020 7739 1869 or scp.co.uk)  
**Wooden storage unit** Chase & Sorensen (020 8533 5523 or chaseandsorensen.com)

**COST**  
The cost for the whole refurbishment was around £130,000